

Visetec CMS



Overview

Visetec CMS is versatile video management software for DVRs, NVRs, IP cameras, etc. It provides several functionalities, including real-time live view, remote search and playback, file backup, alarm receiving, intelligent recognition, etc. for connected devices, and meets the needs of Large, medium and small-sized projects. The Visetec CMS software is widely applied to surveillance projects in financial, public security, telecommunications, transport, electricity, education, etc.



Main Features

General

- Applicable to local and wide area networks
- Remote configuration for added devices
- Management of user permissions
- Resetting of password via server's UID
- Support for PC keyboard shortcuts to conveniently access commonly used actions

Client

- Hardware decoding support for live view and playback

Network

- Online user verification
- Search active online devices
- Device addition via IP ,domain name, UUID of p2p; batch importing of devices
- Two-way audio function

Live View

- Support for H.264 and H.265 video encoding formats
- Viewing of stream info
- Multi-window or Multi-screen live view or playback
- 1~64 window division configuration
- Live view in Fisheye mode for fisheye cameras
- Live view in panoramic mode for 32M panoramic cameras
- Support voice broadcast

PTZ Control

- Remote PTZ control, preset, patrol
- 3D positioning, auxiliary focus, and wiper function

Alarm Management

- Alarm configuration for motion event, intelligent analysis event
- Search and export of linked alarm log pictures
- Real-time alarm viewing
- History alarm search
- Possibility to view latest priority alarm when viewing alarm information in the alarm pop-up window
- Support configuration alarm sounds for speech or buzzer

Recording

- Local manual recording support

Playback

- Remote playback
- Normal, event playback
- Maximum of 16-ch synchronous playback supported
- Frame extracting support for high-speed playback
- Picture grid
- Playback in Fisheye mode for fisheye cameras

Backup

- Downloading of video files to PC
- Batch backup by time period, channels

E-map

- Custom map
- Multilevel
- Online GIS-map
- Offline GIS-map
- Radar PTZ Linkage, radar zoom linkage

TV Wall

- Decoder devices management
- TV wall layout configure
- TV wall windows configure
- TV wall cruise configure

Event Linkage

- Event linkage strategy configure
- Triggered by timing or alarm event
- Linkage E-mail, PTZ, IO output, snapshot

Capture Retrieval

- The pictures captured by the capture device configured by the event linkage module can be retrieved
- Image retrieval can be performed by time, event type, and channel device

Face Recognition

- White library, black library, temporary library for Strangers
- Face trigger local alarm, remote device output alarm, e-mail, Face notice APP
- Face attendance

Body-temperature Monitor

- Real-time temperature screening
- Historical body-temperature search
- Body-temperature statistics
- Over temperature alarm, e-mail, APP subscribe
- Mask detection

Thermal imaging

- Capture strategy configure
- Snapshot data search
- Area temperature data search
- Historical temperature at curve graph view

Thermal Image Inspection

- Thermal imaging equipment inspection plan can be configured according to time and inspection times
- Check the detailed information of the thermal imaging equipment inspection through the inspection calendar
- Inspection results and inspection collection information can be retrieved through inspection records

Regional Management

- Configurable area and can view the summary data of human flow and vehicle flow in each area
- You can check the area equipment and maximum capacity of people flow prevention and control in the area
- You can view the parking space settings, capture equipment, and parking spaces in the area

License Plate Recognition

- White library, black library
- LPR trigger local alarm, remote device output alarm, e-mail, LPR notice APP

Parking Lot

- Free allocation of parking spaces
- It can be configured to generate an alarm when the parking space is full
- Configurable alarm linkage IO

Video data structure

- Pedestrian age, sex, whether to ride or not
- Vehicle type, brand, color and license plate

Statistics

- Device alarm, device online, traffic flow statistics

Visetec CMS



P2P Login



Picture Grid

Search event by pictures, fast locating



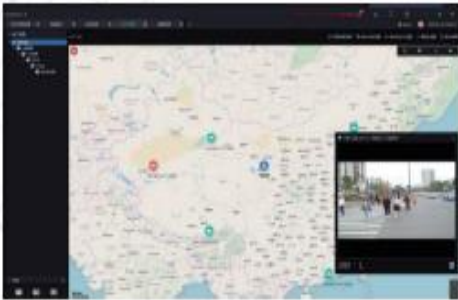
Alarm Events

One-touch play live alarm videos



E-map

Support online map and show camera alarm status



Customizable Interface



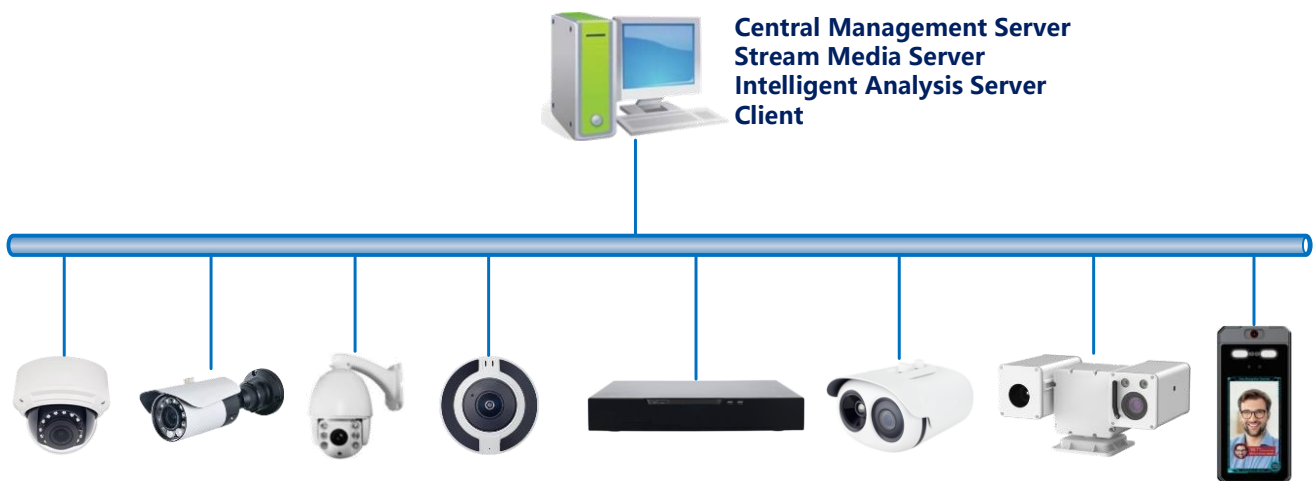
Pop-up/Block Alarm Message

User-defined alarm message

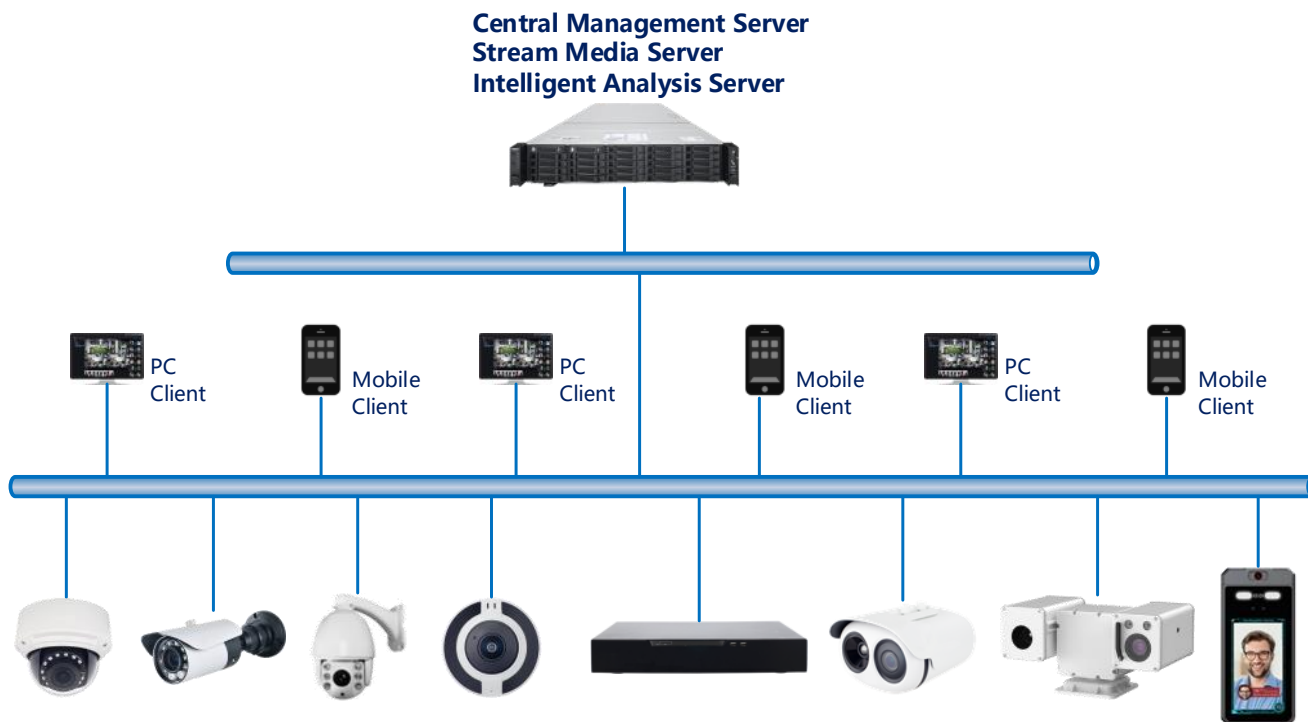


Typical Application

Mini



Middle



Large



System Requirements

System Requirement Overview

| Name | PC Client | Central Management Server | Media Distribution Server | Intelligent Analysis Server (CPU environment) | Intelligent Analysis Server (GPU environment) |
|--------------------|---|--------------------------------|--------------------------------|---|---|
| CPU | Intel® Core™ i5-7500 or better | Intel® Core™ i5-7500 or better | Intel® Core™ i5-7500 or better | Intel® Core™ i7 or better | Intel® Core™ i7 or better |
| RAM | 8 GB or more | 8 GB or more | 8 GB or more | 8 GB or more | 8 GB or more |
| Network Card | Gigabit/s | | | | |
| HDD | 50 GB or Above | 50 GB or Above | 50 GB or Above | 50 GB or Above | 50 GB or Above |
| OS | Microsoft® Windows® 7 Pro (64 bit) Microsoft® Windows® 10 Pro (64 bit) Microsoft® Windows® 10 Enterprise (64 bit) Microsoft® Windows® Server 2012 Microsoft® Windows® Server 2016 | | | | |
| Software | DirectX 11 or above | --- | --- | --- | --- |
| Display Resolution | 1600×960 and above ,default 1920x1080 | --- | --- | --- | --- |
| GPU | --- | --- | --- | --- | NVIDIA GTX 1050 or better |



CAUTION

Central Management Server

Access capability

| Maximum number of logins | Maximum number of access channels |
|--------------------------|-----------------------------------|
| 2000 | 6000 |

Media Distribution Server

NIC parameters

| Channel | Camera Bitrate | Input Bitrate | Output Bitrate |
|---------|----------------|---------------|----------------|
| 200 | 4 Mbps | 800 Mbps | 800 Mbps |
| 400 | 2 Mbps | 800 Mbps | 800 Mbps |
| 500 | 1.5 Mbps | 800 Mbps | 800 Mbps |

Intelligent Analysis Server Reference

The V1.5 version of the intelligent analysis server's face recognition algorithm mode supports CPU or face box devices.

| Type | Model | ROM | Channel of face detection |
|------|---------------------------------|------|---------------------------|
| CPU | Intel(R) Core i5-7500 | 8 G | 1-3 |
| CPU | Intel(R) Core i7-8700 | 8 G | 2-8 |
| CPU | Intel(R) Xeon(R) cpu E5-2630 v4 | 16 G | 4-10 |

NOTE

In the same configuration, the fewer the access cameras, the higher quality of real-time video, the denser the flow of people (human faces), the worse quality of real-time video, and can be adjusted according to actual needs. This is only a reference, please refer to actual configure.

Maximum Number of Cameras Viewed per Client (Software Decoding)

| Encoding Format | CPU | GPU | RAM | Resolution | Bit Rate (Mbps) | Frame Rate (fps) | Maximum Number of Cameras Viewed Simultaneously |
|-----------------|-----------------------|-------------------|------|------------|-----------------|------------------|---|
| H264 | Intel(R) Core i5-8500 | Intel HD Graphics | 8 GB | 1080P | 4.5 | 25 | 12 |
| | | | 8 GB | D1 | 1.5 | 25 | 48 |
| | | | 8 GB | CIF | 1 | 25 | 64 |
| H265 | Intel(R) Core i5-8500 | Intel HD Graphics | 8 GB | 1080P | 4.5 | 25 | 6 |
| | | | 8 GB | D1 | 1.5 | 25 | 32 |
| | | | 8 GB | CIF | 1 | 25 | 64 |

Maximum Number of Cameras Viewed per Client (Hardware Decoding)

| Encoding Format | CPU | GPU | RAM | Resolution | Bit Rate (Mbps) | Frame Rate (fps) | Maximum Number of Cameras Viewed Simultaneously |
|-----------------|-----------------------|-------------------|------|------------|-----------------|------------------|---|
| H264 | Intel(R) Core i5-7500 | NVIDIA GTX 1050Ti | 8 GB | 1080P | 4.5 | 25 | 24 |
| | | | 8 GB | D1 | 1.5 | 25 | 72 |
| | | | 8 GB | CIF | 1 | 15 | 128 |
| H265 | Intel(R) Core i5-7500 | NVIDIA GTX 1050Ti | 8 GB | 1080P | 4.5 | 25 | 20 |
| | | | 8 GB | D1 | 1.5 | 25 | 64 |
| | | | 8 GB | CIF | 1 | 15 | 96 |